

# Project Workflow Efficiency Monitoring



## Company Profile

A leading media and entertainment company



Headcount  
4000+



Presence  
Worldwide

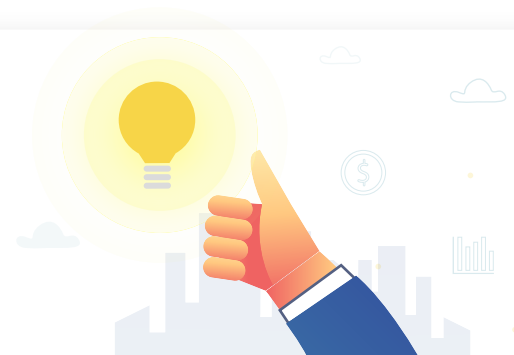
## Key Challenges

The company manually tracked its work efficiency and bottlenecks across projects with rigorous data collection and analysis. It was a complex process as project managers had to spend several crucial hours creating reports.

- Lack of real-time visibility into the progress of work items/issues across different stages
- Complex Python scripting and significant costs with multiple tool licenses
- Higher time to insights; inability to identify bottlenecks quickly

## The Solution

Klera helped the organization in implementing its Project Management KPI tracking solution. The solution involved integration with Jira and provided a quick overview of the projects:





- **Quick integration** with Jira using Klera’s out-of-the-box connector.
- **Ready dashboard** to identify ‘lead’ and ‘work in progress’ times for issues across distributed teams and projects.
- **Actionable insights** like time spent across stages to identify potential bottlenecks in stages. Similarly, time spent across different issue types helped in understanding how much time was spent on bugs and improvements vs. features. It also offered visibility into individual productivity, tracking the average time spent on issues by different assignees.
- **Time & cost savings** as Klera replaced multiple tools for automation, database, and BI dashboarding and provided a single platform to collect and visualize data, without requiring any complex scripting and computations.

## The Impact

The company was able to get near real-time visibility into the performance of its teams and the progress of projects. With a single dashboard providing quick insights into workflow efficiency, the managers were able to significantly reduce their time and effort in gathering and analyzing the data from Jira.

**“Earlier, we used to rely mostly on meetings and updates from team members to understand their issues. Preparing those reports was a monthly task and we couldn’t really rely on it for daily decision-making. Now we have a dashboard that provides instant updates and helps us quickly reassign issues or re-allocate work to different team members and reduce wastage.”**

- VP, Products & Innovations



Klera™ is a software products and services company focused on creating solutions that deliver intelligence from data, unlike ever before. We enable transparent, collaborative, and connected enterprises, without data silos. Our rapid, no code, intelligent application development platform simplifies how you gather, analyze, and synchronize data.